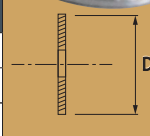


# Elevator bolts & accessories

## FOR PLASTIC BUCKETS WITH FLAT HOLES ON THE INSIDE

### FLAT WASHERS FOR PLASTIC BUCKETS WITH COUNTERSUNK OUTER HOLES AND FLAT INNER HOLES

Type	Bolt Ø mm	ØD	ØD mm (hole)	f thickness ca. mm
M6x24	6	12	6,3	1,2
M8x30	8	30	8,3	1,5
M10x36	10	36	10,5	2,0

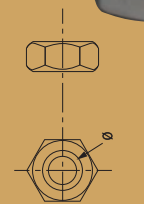


Other sizes, types and qualities are available on request.



### HEX NUT/SELF-LOCKING NUT

Type	Ø mm	Packing-unit stk.
M7	7	100/200
M8	8	100/200
M10	10	100/200
M12	12	100/200

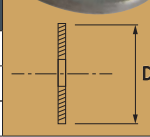


Other sizes, types and qualities are available on request.



### FLAT WASHERS FOR STEEL BUCKETS WITH FLAT OUTER/INNER HOLES

Type	Bolt Ø mm	ØD	ØD mm (hole)	f thickness ca. mm
M6x24	6	14	6,3	1
M8x30	8	18	8,3	1,5
M10x36	10	22	10,5	2,0

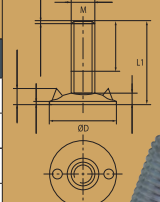


Other sizes, types and qualities are available on request.



### ELEVATOR BOLTS

Type M	Length mm L1	Head ØD mm
M7	20,25,28,30	20,24
M8 standard	25,30,35,40,50	28
M8 LH1	30	25
M8 LH2	35	24
M10	30,35,40,50,60	35
M12	35,40,50,60	42

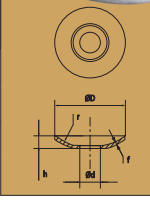


Other sizes, types and qualities are available on request.

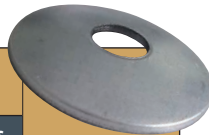


### DOMED WASHER FOR BUCKETS WITH COUNTERSUNK OUTER/INNER HOLES

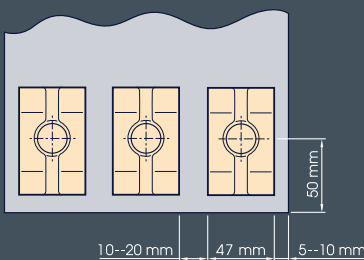
Type	Bolt Ø mm	ØD	ØD mm (hole)	h mm	f thickness ca. mm
M7/M8x24	7/8	24	8,2	3,4	1,2
M8x29	8	29	8,5	5,2	1,2
M10x38	10	38	11	5,3	2,0
M12x40	12	40	13	8,3	2,0



Other sizes, types and qualities are available on request.

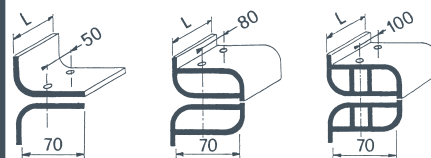


## BELT FASTENERS



### WELDED STEEL

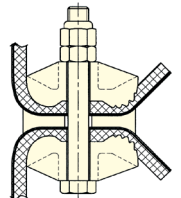
S	D	DR
100 N/mm à 315 N/mm	400 N/mm à 630 N/mm	800 N/mm à 1000 N/mm
L	50 - 98 - 128 - 148	



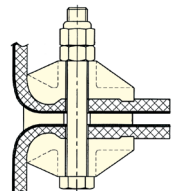
### DROP FORGED STEEL



MAXIGRIP 2  
800 N/mm à 1 600 N/mm



MAXIGRIP 1 - ≤ 630 N/mm



Subject to alterations