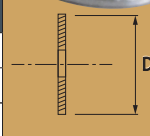


Elevator bolts & accessories

BOLTS, WASHERS & NUTS

FLAT WASHERS FOR PLASTIC BUCKETS WITH COUNTERSUNK OUTER HOLES AND FLAT INNER HOLES

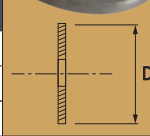
Type	Bolt Ø mm	ØD	ØD mm (hole)	f thickness ca. mm
M6x24	6	12	6,3	1,2
M8x30	8	30	8,3	1,5
M10x36	10	36	10,5	2,0



Other sizes, types and qualities are available on request.

FLAT WASHERS FOR STEEL BUCKETS WITH FLAT OUTER/INNER HOLES

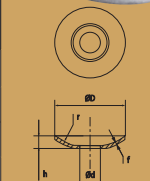
Type	Bolt Ø mm	ØD	ØD mm (hole)	f thickness ca. mm
M6x24	6	14	6,3	1
M8x30	8	18	8,3	1,5
M10x36	10	22	10,5	2,0



Other sizes, types and qualities are available on request.

DOMED WASHER FOR BUCKETS WITH COUNTERSUNK OUTER/INNER HOLES

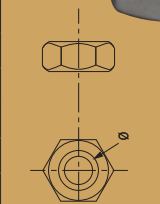
Type	Bolt Ø mm	ØD	ØD mm (hole)	h mm	f thickness ca. mm
M7/M8x24	7/8	24	8,2	3,4	1,2
M8x29	8	29	8,5	5,2	1,2
M10x38	10	38	11	5,3	2,0
M12x40	12	40	13	8,3	2,0



Other sizes, types and qualities are available on request.

HEX NUT/Self-LOCKING NUT

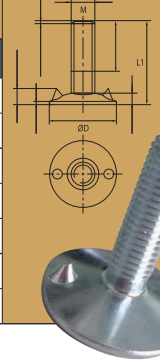
Type	Ø mm	Packing-unit stk.
M7	7	100/200
M8	8	100/200
M10	10	100/200
M12	12	100/200



Other sizes, types and qualities are available on request.

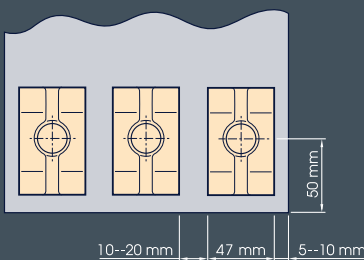
ELEVATOR BOLTS

Type M	Length mm L1	Head ØD mm
M7	20,25,28,30	20,24
M8 standard	25,30,35,40,50	28
M8 LH1	30	25
M8 LH2	35	24
M10	30,35,40,50,60	35
M12	35,40,50,60	42

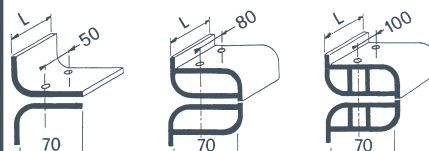


Other sizes, types and qualities are available on request.

BELT FASTENERS



WELDED STEEL



S	D	DR
100 N/mm à 315 N/mm	400 N/mm à 630 N/mm	800 N/mm à 1000 N/mm
L	50 - 98 - 128 - 148	

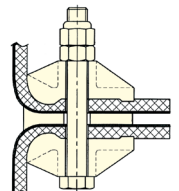
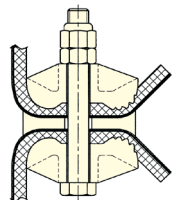
DROP FORGED STEEL



MAXIGRIP 2
800 N/mm à 1 600 N/mm



MAXIGRIP 1 - ≤ 630 N/mm



Subject to alterations

SPACERS

Spacers are placed between the elevator belt and elevator buckets for a variety of purposes and are available in different sizes and materials.

Spacers are most often used to create a space between the belt and the bucket to minimise clogging of grain/material particles. Self-cleaning using spacers is particularly important when conveying uniform material, such as seed corn or grass seed.

Spacers are available in many different materials, most often as punched inserts made of belting material, pure rubber or injection-moulded PEHD. Spacers are available in wear-resistant, oil-resistant and food-approved rubber qualities. We also offer rubber plates, which can be located between bucket and belt, and cut and drilled according to the specific application. The rubber quality can be adapted to requirements.

SPACERS – BELTING MATERIAL



Available sizes: Ø 35 x M8
 Ø 35 x M10
 Ø 40 x M10
 Thicknesses: Between 5 and 12 mm by agreement.

The thicknesses will be the same per order. Other sizes are available on request.

SPACERS OF PURE RUBBER



Available sizes: Ø 35 x M8
 Ø 35 x M10
 Ø 40 x M10
 Thicknesses: Between 6 and 12 mm by agreement.

The thicknesses will be the same per order. Other sizes are available on request.

SPACERS IN PEHD - 10 mm

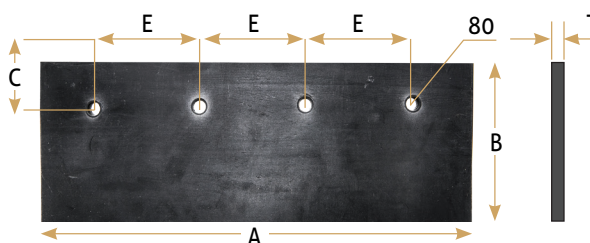


Available sizes: Ø 25 x 8,5 x M8
 Ø 35 x 8,5 x M10
 Ø 35 x 10,5 x M10

The spacers are injection molded with recess to fit bolt head.
 The PEHD spacers are FDA/EN1935-2004 approved

Important ! – when using spacer PEHD25x8 bolts with head Ø24 or Ø25 mm must used.

RUBBER PLATE



Rubber plates are cut to order, so it is important to know all the measurements as shown in the sketch.

In order to choose the correct rubber quality, please inform us about the material to be conveyed.