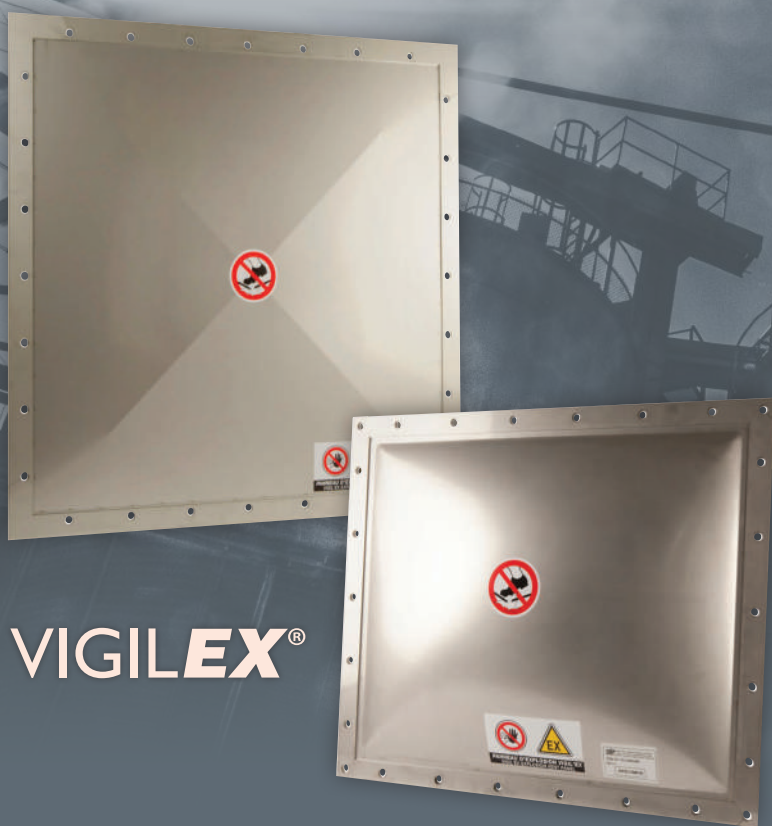
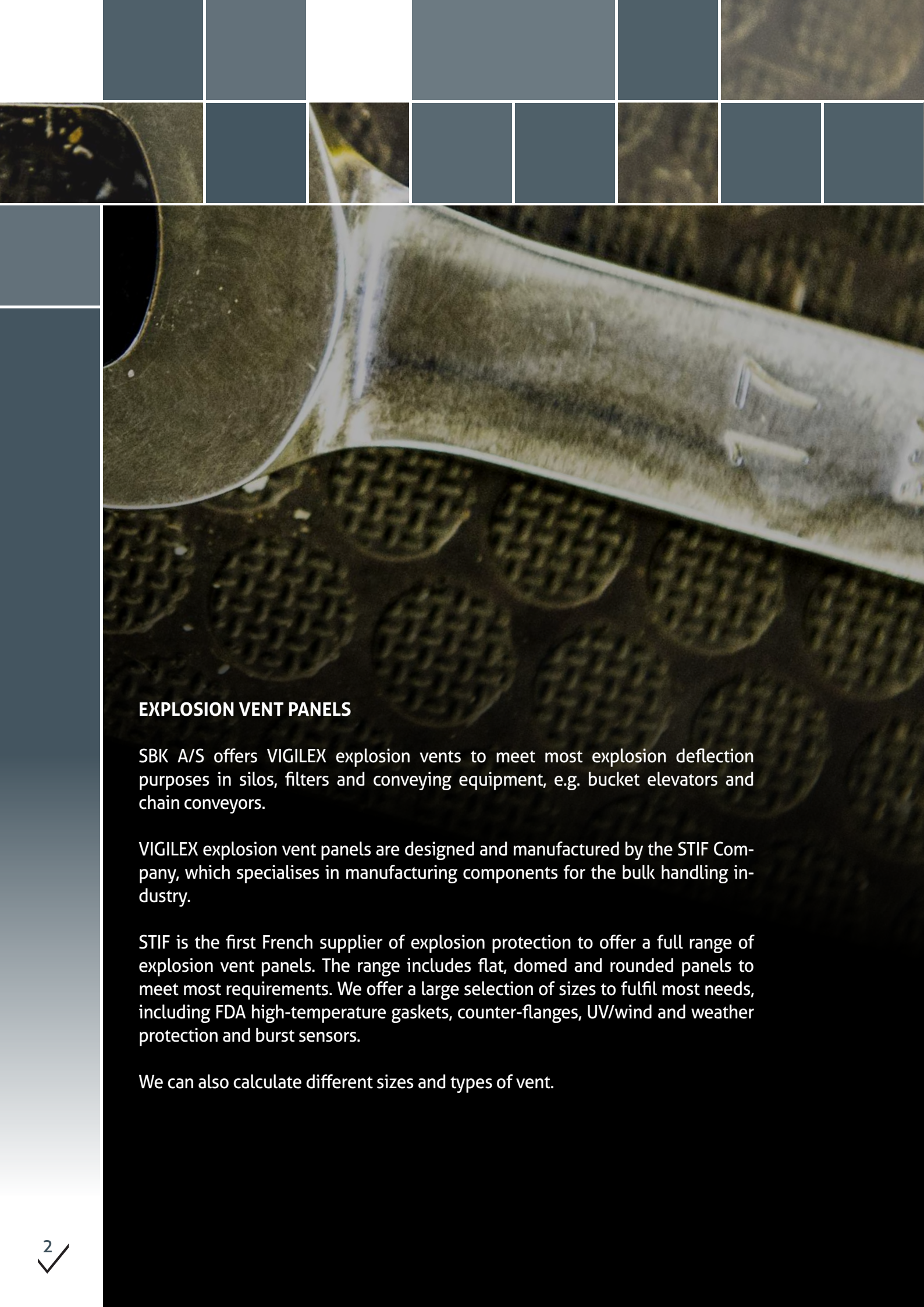


# EXPLOSION VENT PANELS



VIGILEX®



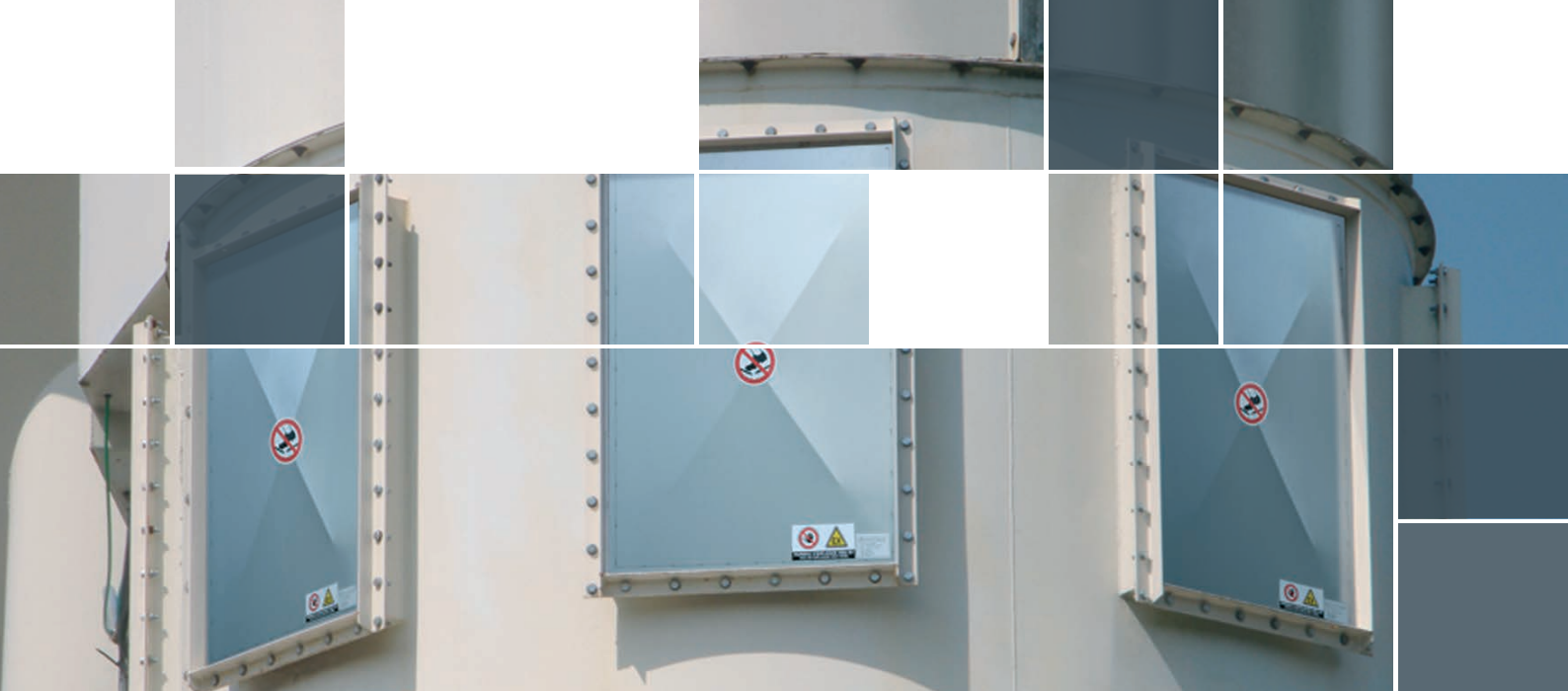
## EXPLOSION VENT PANELS

SBK A/S offers VIGILEX explosion vents to meet most explosion deflection purposes in silos, filters and conveying equipment, e.g. bucket elevators and chain conveyors.

VIGILEX explosion vent panels are designed and manufactured by the STIF Company, which specialises in manufacturing components for the bulk handling industry.

STIF is the first French supplier of explosion protection to offer a full range of explosion vent panels. The range includes flat, domed and rounded panels to meet most requirements. We offer a large selection of sizes to fulfil most needs, including FDA high-temperature gaskets, counter-flanges, UV/wind and weather protection and burst sensors.

We can also calculate different sizes and types of vent.



# VIGILEX®

**VIGILEX explosion vent panels** are specially designed to meet applicable health and safety requirements and are suitable for use in potentially explosive atmospheres (ATEX Directive 94/9/EC). In the event of an explosion, the vent panels are designed to deflect the pressure in order to protect both the workforce and surrounding facilities. VIGILEX explosion vent panels offer a simple and efficient protection system which is designed to resist vacuum under specific conditions and can be used in silos, cyclones, filter units and tanks.

## THE ATEX DIRECTIVE: 94/9/EC 1994

### COMPLIANCE:

EX II GD EN 14491 / EN 14994 / EN 14797:2007 / EN 1127.1-2008

### EC TYPE EXAMINATION CERTIFICATE:

INERIS 08ATEX038X

### PRODUCTION QUALITY ASSURANCE

NOTIFICATION: INERIS 08ATEXQ406



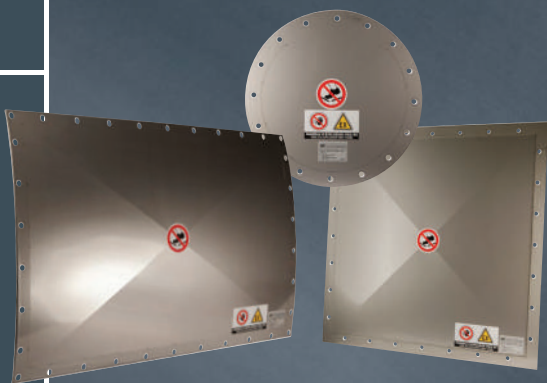
## QUALITY CONTROL

We calculate vent area using the vessels' technical specifications and in accordance with EN 14491, EN 14994, VDI 3673 or NFPA68 standards.

We test explosion vent vents at our own factory according to EN 14797.

Our panels are manufactured using the EC type examination certificate INERIS 08ATEX038X. The company's quality management system is certified according to the EC type examination certificate INERIS 08ATEXQ406. Explosion vent panels are supplied with a full type certificate including burst test results and fitting instructions.

## VIGILEX VL



**DESIGNED FOR FLAT OR DOMED FILTERS AND FOR SANITARY APPLICATIONS. STANDARD VACUUM RESISTANCE: 50 MBAR**

### STANDARD VL:

- Design: Single flat
- Material, stainless steel AISI 304
- Full frame flange gasket, black EPDM (-40 ° +80° C)
- Integrated stainless steel flange
- Can be rolled: Radius on request.

### OPTION VL SANITARY

- Material, stainless steel AISI 316L
- Full flange gasket, FDA silicone gasket (-40 ° +180° C)
- Integrated stainless steel 316L flange

## VIGILEX VD



**IDEAL FOR VACUUM PROCESS WITH PULSATING/CYCLING APPLICATIONS. STANDARD VACUUM RESISTANCE: 200 MBAR**

### STANDARD VD:

- Design: Single domed
- Material, stainless steel AISI 304
- Full frame flange gasket, black EPDM (-40 ° +80° C)
- Integrated stainless steel flange

### OPTION VD SANITARY:

- Material, stainless steel AISI 316L
- Full flange gasket, FDA silicone gasket (-40 ° +180° C)
- Integrated stainless steel 316L flange
- Other vacuum resistance available

## VIGILEX VL-S



**DESIGNED FOR FLAT OR DOMED APPLICATIONS FILTERS, SILOS, ETC. STANDARD VACUUM RESISTANCE: 50 MBAR**

### STANDARD VL-S:

- Design single flat
- Material, stainless steel AISI 304
- Additional flanges needed
- Black EPDM gasket (-40°+80°C)

### OPTION VL-S SANITARY:

- Material, stainless steel AISI 316L
- Additional flanges needed 316L
- Silicon FDA gasket (-60°+200°C)
- Can be rolled : radius on request

## VIGILEX V-FLEX



**DESIGNED ALSO FOR ROUND SHAPED EQUIPMENT. MANUAL RUNNING. STANDARD VACUUM RESISTANCE: 50 MBAR**

### STANDARD V-FLEX:

- Design single flat, can be rolled by hand
- Material, stainless steel AISI 304
- Full frame flange gasket, black EPDM (-40 ° +80° C)
- Integrated stainless steel flange

### OPTION V-FLEX SANITARY:

- Material, stainless steel AISI 316L
- Full flange gasket, FDA silicone gasket (-40 ° +180° C)
- Integrated stainless steel 316L flange
- Silicon FDA gasket (-60°+200°C)

## EXPLOSION VENT PANEL DIMENSIONS: VL-VD-VL-S, V-FLEX RECTANGULAR & SQUARE

INNER DIMENSIONS		OUTER DIMENSIONS	VENTING AREA	INNER DIMENSIONS		OUTER DIMENSIONS	VENTING AREA
( mm )	Inches	( mm )	( cm <sup>2</sup> )	( mm )	Inches	( mm )	( cm <sup>2</sup> )
110 x 290	4 x 11	174 x 354	290	* 580 x 780	22 x 30	680 x 880	4520
* 110 x 530	4 x 21	210 x 630	580	586 x 920	23 x 36	666 x 1000	5360
130 x 550	5 x 22	220 x 640	700	* 600 x 600	24 x 24	666 x 666	3410
150 x 600	6 x 24	230 x 680	885	610 x 610	24 x 24	690 x 690	3695
205 x 290	8 x 11	285 x 370	580	610 x 1118	24 x 44	690 x 1198	6785
220 x 420	9 x 17	300 x 500	910	629 x 1004	25 x 40	685 x 1059	6050
229 x 229	9 x 9	310 x 310	515	* 645 x 645	21 x 26	740 x 740	4160
229 x 305	9 x 12	310 x 386	690	653 x 653	26 x 26	740 x 740	4260
247 x 610	10 x 24	327 x 690	1485	669 x 669	26 x 26	740 x 740	4460
* 250 x 480	4 x 21	350 x 580	1200	* 680 x 680	27 x 27	780 x 780	4620
270 x 500	11 x 20	360 x 590	1330	680 x 880	27 x 35	780 x 980	5980
* 280 x 530	11 x 21	380 x 630	1480	700 x 700	28 x 28	790 x 790	4870
* 300 x 600	12 x 24	366 x 666	1585	780 x 780	30 x 31	880 x 880	6080
305 x 457	12 x 18	386 x 538	1385	* 780 x 980	30 x 39	880 x 1080	7640
319 x 765	12 x 30	405 x 850	2480	* 780 x 1180	30 x 46	880 x 1280	9200
340 x 385	13 x 15	404 x 449	1250	800 x 800	31 x 31	850 x 850	6145
340 x 440	13 x 17	404 x 504	1430	800 x 1000	31 x 40	890 x 1090	7960
375 x 655	15 x 25	460 x 740	2485	* 880 x 880	35 x 35	980 x 980	7740
390 x 620	15 x 24	470 x 700	2395	900 x 900	35 x 35	990 x 990	8060
* 400 x 400	16 x 16	496 x 496	1580	915 x 1118	36 x 44	996 x 1198	10200
410 x 410	16 x 16	480 x 480	1660	* 920 x 920	36 x 36	1000 x 1000	8425
457 x 890	20 x 28	537 x 970	4040	920 x 1380	36 x 54	1000 x 1460	12420
470 x 610	18 x 24	550 x 690	2845	940 x 1440	37 x 56	1000 x 1500	13250
* 480 x 480	19 x 19	580 x 580	2300	970 x 970	38 x 38	1056 x 1056	9405
* 480 x 680	19 x 27	580 x 780	3260	* 980 x 980	39 x 39	1080 x 1080	9600
490 x 590	19 x 23	570 x 670	2865	1000 x 1000	40 x 40	1056 x 1056	9680
500 x 500	20 x 20	590 x 590	2480	1020 x 1020	40 x 40	1100 x 1100	10360
500 x 700	20 x 28	590 x 790	3475	1080 x 1080	42 x 42	1180 x 1180	11620
525 x 668	21 x 26	630 x 765	3475	1130 x 1130	44 x 44	1220 x 1220	12720
VH only in the following sizes: *				1180 x 1180	46 x 46	1280 x 1280	13875

## ROUND

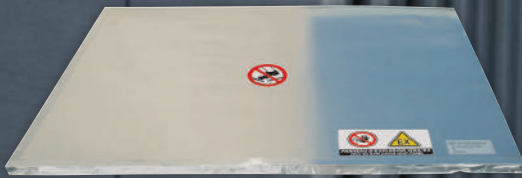
INNER DIMENSIONS		OUTER DIMENSIONS	VENTING AREA	INNER DIMENSIONS		OUTER DIMENSIONS	VENTING AREA
( mm )	Inches	( mm )	( cm <sup>2</sup> )	( mm )	Inches	( mm )	( cm <sup>2</sup> )
Ø 200	8	Ø 268	310	Ø 500	20	Ø 574	1935
Ø 250	10	Ø 341	480	Ø 600	24	Ø 676	2790
Ø 300	12	Ø 390	695	Ø 700	28	Ø 776	3830
Ø 350	14	Ø 422	955	Ø 750	30	Ø 848	4400
Ø 400	16	Ø 473	1250	Ø 800	31	Ø 890	5005
Ø 450	18	Ø 545	1580	Ø 900	36	Ø 980	6335
				Ø 980	39	Ø 1070	7510

## TECHNICAL INFORMATION

STIF MODEL	DESIGN	PSTAT AT 20 °C	EFFICIENCY LEVEL	MAX VACUUM	KST MAX	ALTERNATIVE SANITARY
VL	Single layer, flat	0,1 bar (±15%)	80 % - 100 %	50 mbar	500 bar.m/s	*
VD	Single layer, domed		80 % - 100 %	200 - 500 mbar	500 bar.m/s	*
VL-S	Single layer, flat		80 % - 100 %	50 mbar	500 bar.m/s	*
V-FLEX	Single layer, flat		80 % - 100 %	50 mbar	500 bar.m/s	*

## THERMAL INSULATION VIGILEX TI

Thermal insulation using ARMAFLEX covered with aluminium foil to prevent heat loss, condensation and provide UV protection.



## MOUNTING FRAMES VIGILEX CB

Range of counter-flanges, galvanised or stainless steel.



## OPTIONS:

- Other sizes available on request
- Different burst pressure available on request
- Other gasket material available on request

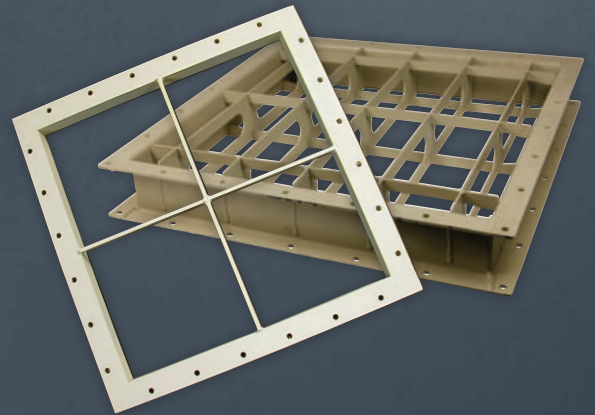
## THERMAL INSTALLATION VIGILEX WI WITH WEATHER PROTECTION

This lightweight thermal installation with weather cover protects explosion vent panels from the elements, minimising the effects of wind, snow, hail and dirt.

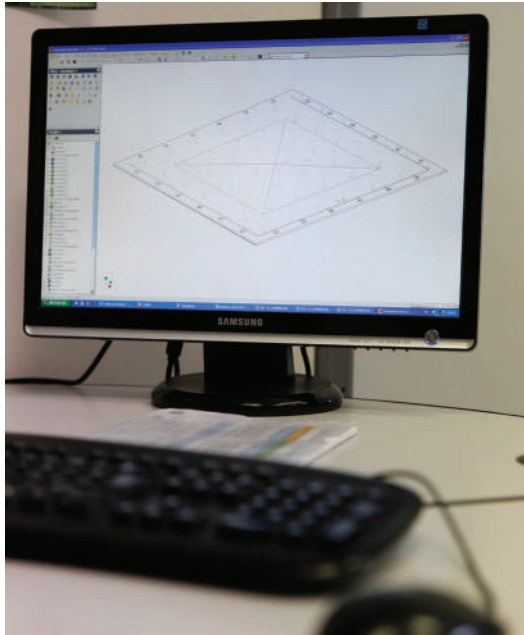


## VACUUM SAFETY GRID VIGILEX GS & GD

Range of fall and vacuum protection in galvanised or stainless steel.



- Bolts and earth lead
- Material stainless steel 316L
- Delivery without integrated flange: VD & VL

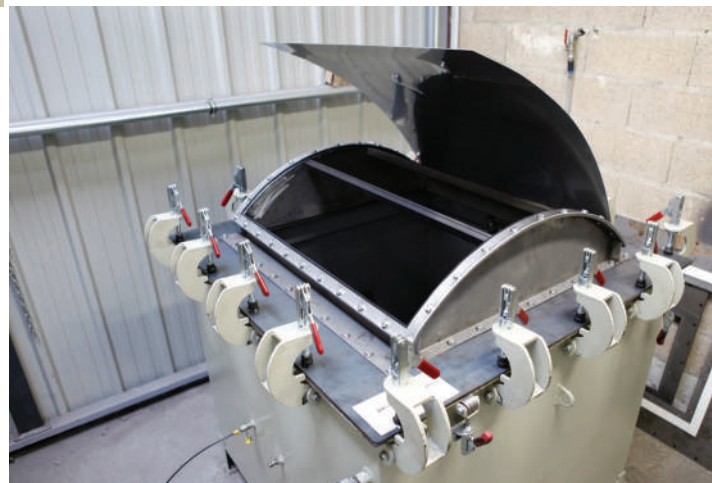


## VENT AREA CALCULATION

We calculate vent area using the vessels' technical specifications and according to EN 14491, EN 14994, VDI 3673 or NFPA68 standards.

## QUALITY CONTROL

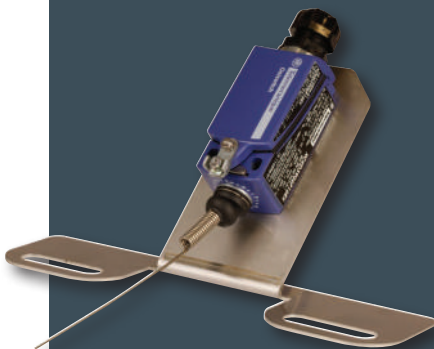
We test the explosion vents at our own factory according to EN 14797. Our panels are manufactured using the EC type examination certificate INERIS 08ATEX038X. The company's quality management system is certified according to the EC type examination certificate INERIS 08ATEXQ406. Explosion vent panels are supplied with a work test certificate including burst test results and fitting instructions.



## BURST SENSOR

### VIGILEX MEC

Mechanical sensor ATEX zone 21



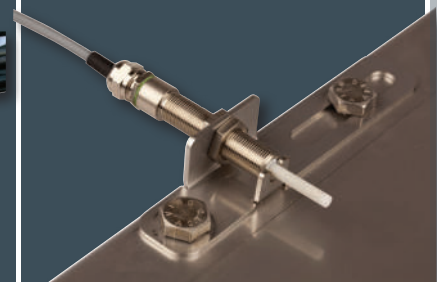
### VIGILEX MAG

Magnetic sensor ATEX zone 21



### VIGILEX SEC

Burst sensor ATEX zone 21



**SBK**  SKANDINAVISK A/  
BÅNDKOMPAGNI / S  
**www.sbk-belt.dk**

Birkegårdsvej 34 A | DK-8361 Hasselager  
T: +45 87 34 70 80 | F: +45 87 34 70 81 | E: info@sbk-belt.dk