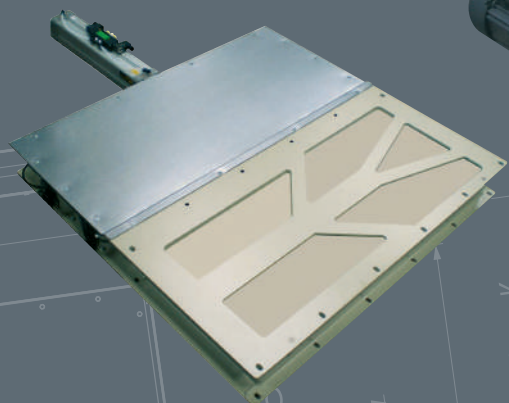
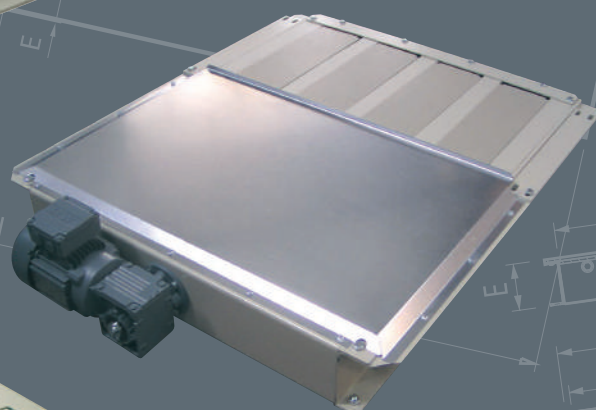
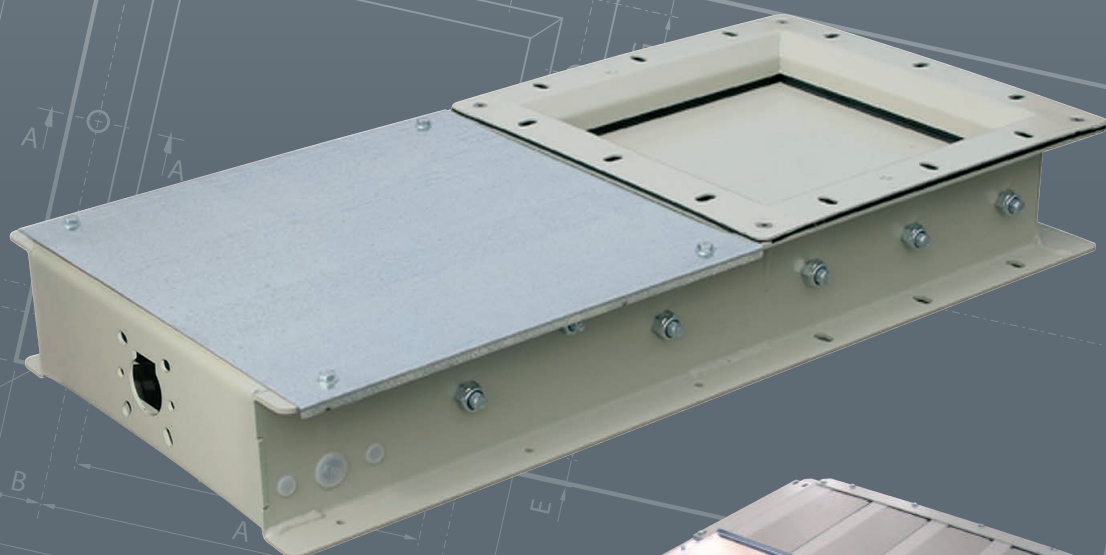


SKANSLIDE SLIDIVALVES



SBK



SKANDINAVISK A/
BÅNDKOMPAGNI S



SBK A/S offers a wide range of manual, electronic and pneumatic slidevalves.

We offer valves painted with RAL 7032, and made in AISI 304 or AISI 316 steel.

In addition to standard slide valves, we offer slide valves for chain conveyors and vertical slidevalves.



PRODUCTS



Horizontal slidevalves

Grain size >1,2 mm

TGS FDA 80° / SILICONE 200° C

TGH 600° C

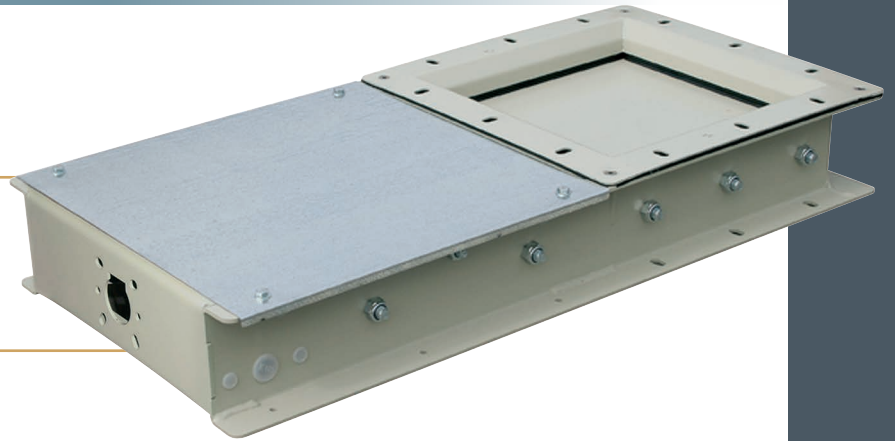
Part icle size >0,3 mm

TGE FDA 80° / C

TGT SILICONE 200° C

Part icle size >0,3 mm

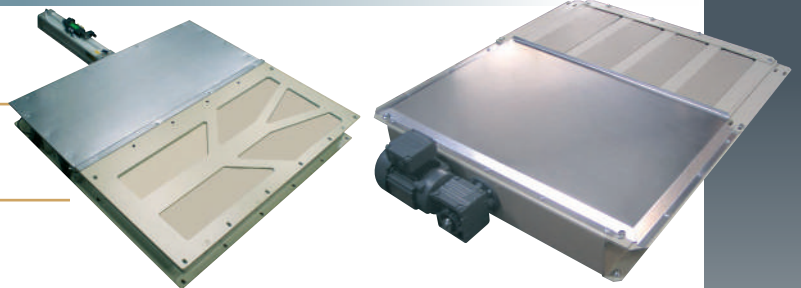
TGR FDA 80° C



Chain conveyor slidevalve

TTS BASIC SLIDEVALVES

TGE BASIC SLIDEVALVES NO STOP



Vertical slidevalves

TVS BASIC SLIDEVALVES

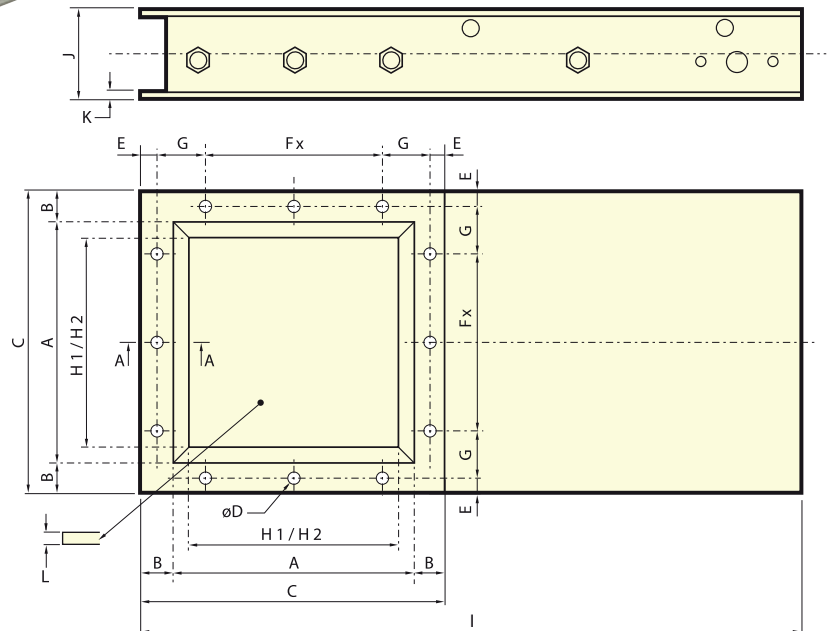
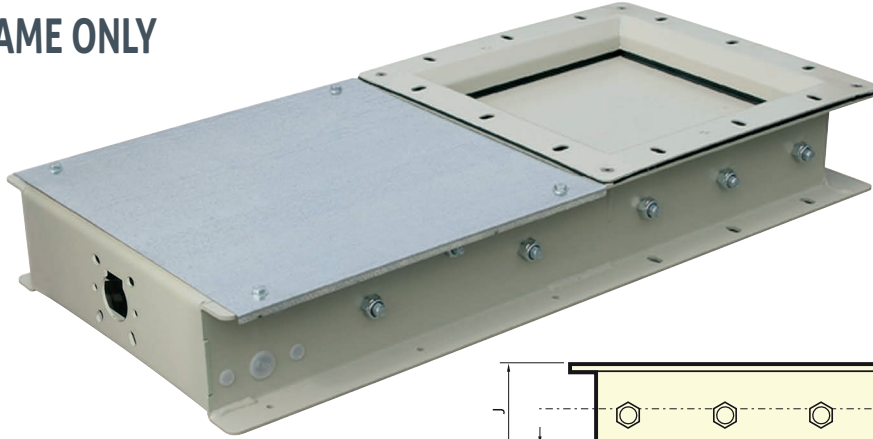
TVD DOUBLE SLIDEVALVES FOR DOSING



Subject to alterations

SKANSLIDE SLIDEVALVES

FRAME ONLY



mm	A	B	C	øD	E	Fx	G	H1*	H2'	I	J	K	L
150	150	33	216	9	15	95	45,5	150	116	490	98	3	4
200	200		266			140	48	196	162	590			
250	250	45	316	11	20	2x95	48	246	212	690	114	4	6
300	300		390			2x110	65	296	262	805			
350	350		440			2x140	60	346	312	905			
400	400	45	490	11	20	2x160	65	396	362	1025	124	5	8
450	450		540			2x180	70	446	412	1125			
500	500	590	3x140	65	496	462	1225						

* H1 for slidevalves type TGS-TGH (p. 5)
H2 for slidevalves type TGE-TGT-TGR (p. 5)

VALVES

STANDARD MODEL:

- A coat of paint RAL 7032
- Performing in stainless steel on request

Subject to alterations

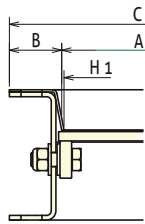
SKANSLIDE SLIDEVALVES

DUSTPROOF SEALS



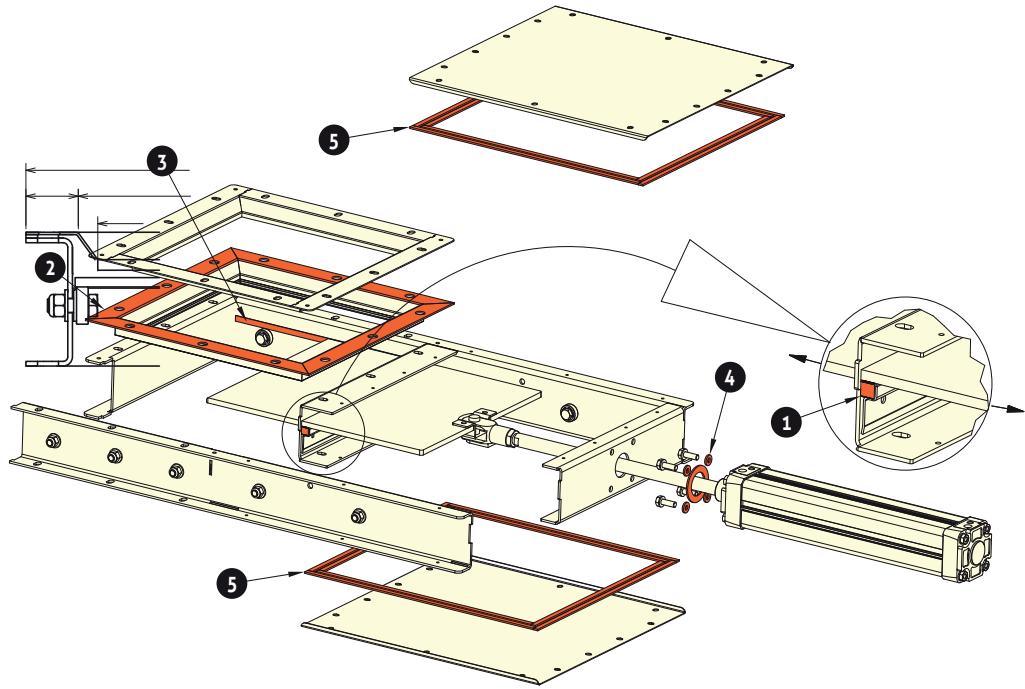
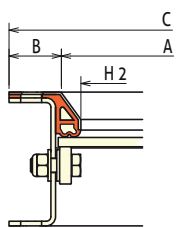
Type :

TGS - TGH



Type :

TGE - TGT - TGR



DUSTPROOFNESS						
REFERENCE	1	2	3	4	5	
TGS 80°C/200°C ☼ > 1,2 mm FDA	FDA/Silicone 80°C/200°C	-	-	-	-	-
TGH 600°C ☼ > 1,2 mm	600°C	-	-	-	-	-
TGE 80°C ☼ > 0,3 mm FDA	FDA 80°C	FDA 80°C	-	-	-	-
TGT 200°C ☼ > 0,3 mm FDA	Silicone 200°C	Silicone 200°C	-	-	-	-
TGR 80°C ☼ > 0,3 mm FDA	FDA 80°C	-	FDA 80°C FDA vulcanized	FDA 80°C	FDA 80°C	FDA 80°C

☼ = Size Grading

REFERENCE:

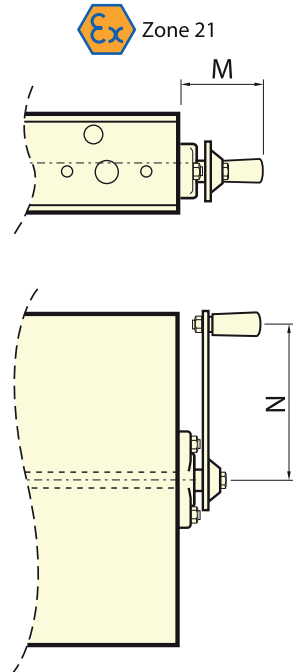
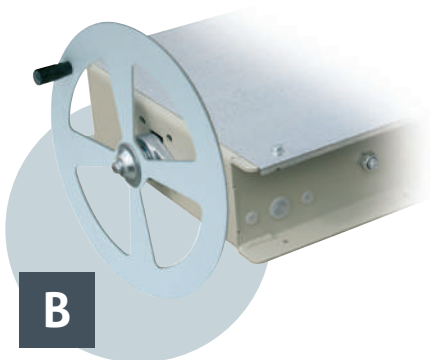
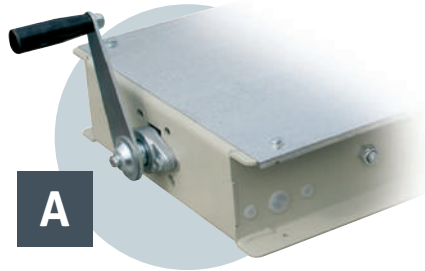
- TG** Slidevalves
- S** Standard
- H** Temperature resistant 600° C
- E** Dustproof + FDA approved
- T** Dustproof + Temperature resistant 200° C
- R** Full dust tightness – strengthened

Subject to alterations

CONTROLS

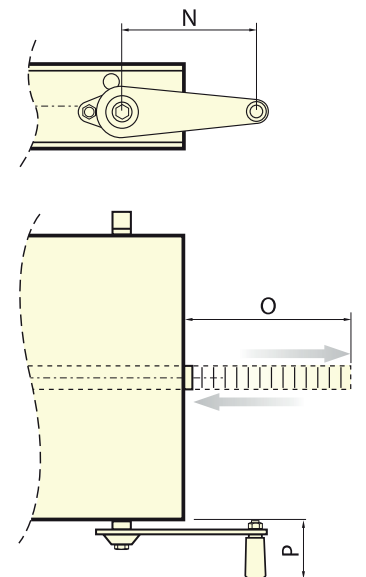
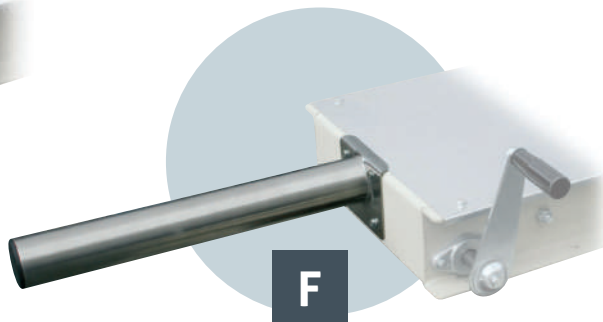
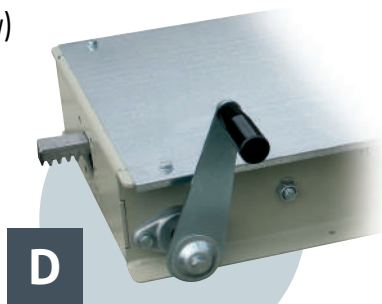
SKANSLIDE SLIDEVALVES MANUAL CONTROLS

- Screw TR20 – gate 12 L
- **A** with handle
- **B** with control wheel
- **C** with chain drive



RACK CONTROL

- M3 rack control (away from production flow)
- 18-tooth chain drive
- **D** with control wheel
- **E** with chain drive
- **F** Optional: rack control protection



SKANSLIDE SLIDEVALVES

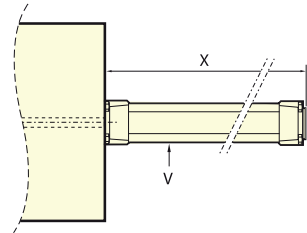
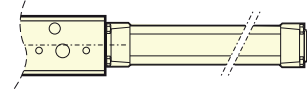
CONTROLS

 Zone 21

PNEUMATIC DRIVE

Cylinder with:

- 2 Exhaust flow controllers
- Magnetic vent 5/2 – 1 EV 48 V AC
- Tubing supply \varnothing 6/8

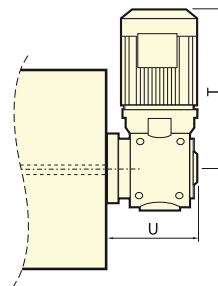
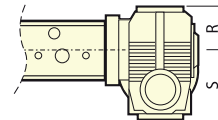


ELECTRICAL MOTOR CONTROL

- 3 phased voltage 230/400 V – 50 Hz IP55
- Screw TR20 - Pitch 12 L



mm	M	N	O	P	R	S	T	U	V	X
150			155						\varnothing 50x200	350
200			205						\varnothing 50x250	360
250			255						\varnothing 50x250	360
300	50	150	305	70	54	128	250	114	\varnothing 63x350	475
350			355						\varnothing 63x350	475
400			405						\varnothing 80x400	532
450			455						\varnothing 80x400	532
500			505						\varnothing 100x500	642



INDUCTIVE ENDSTOP

- Fixed on slidevalve frame



REED SWITCH

- Fixed on cylinder



Subject to alterations

SKANSLIDE SLIDEVALVES

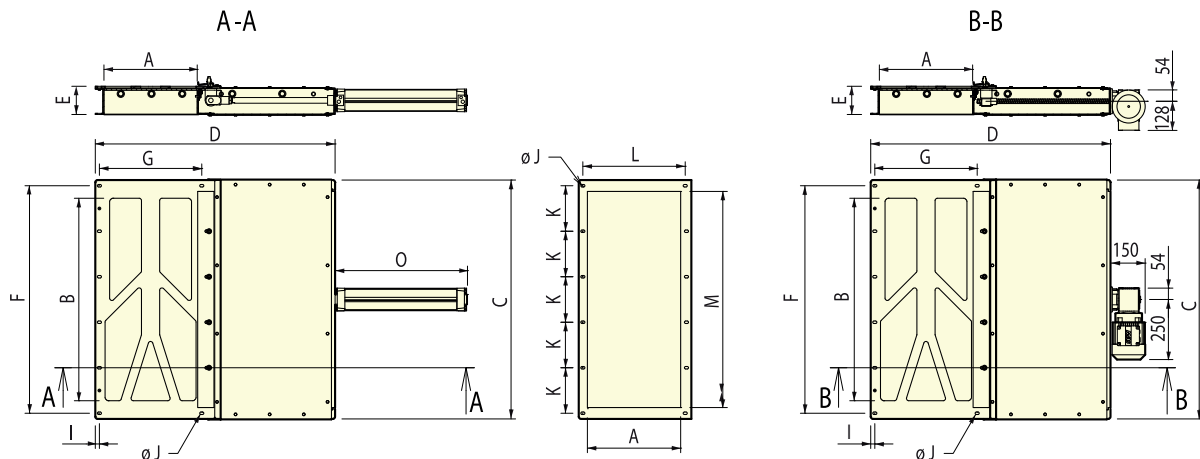
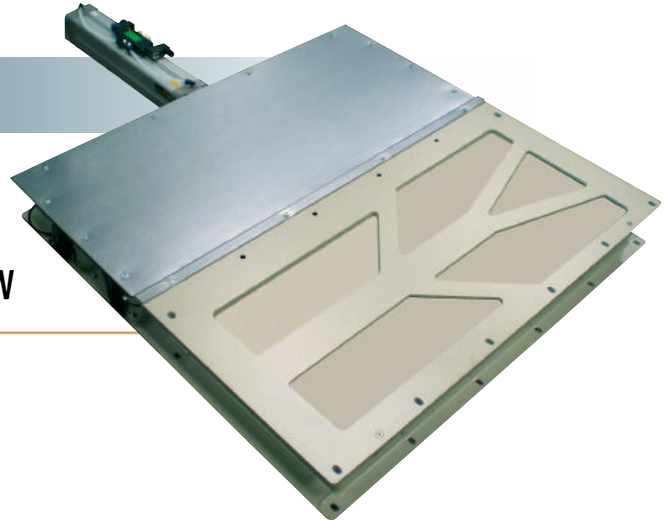
CHAIN CONVEYOR SLIDEVALVE



TTS

PNEUMATIC CYLINDER CONTROL

MOTO-REDUCER ELECTRICAL CONTROL 0,37 KW SEW



mm	A	B	C	D	E	F	G	H	I	J	K	L	M	N
200 x 660	200	788	928	955	144	836	245	32	78	4 ø11	4x200	250	738	10xø11
250 x 660	250			1055			295					300		
300 x 660	300			1155			345					350		
350 x 660	350			1255			395					400		
400 x 860	400			988			1128					1355		

CHAIN CONVEYOR SLIDE VALVE WITH INTEGRAL CHAIN CONSOLE

Standard design: 1 x coat of RAL 7032 paint – stainless steel and other dimensions available on request.

Subject to alterations

SKANSLIDE SLIDEVALVES

SELF CLEANING SKANSLIDE SLIDEVALVE FOR CHAIN CONVEYORS

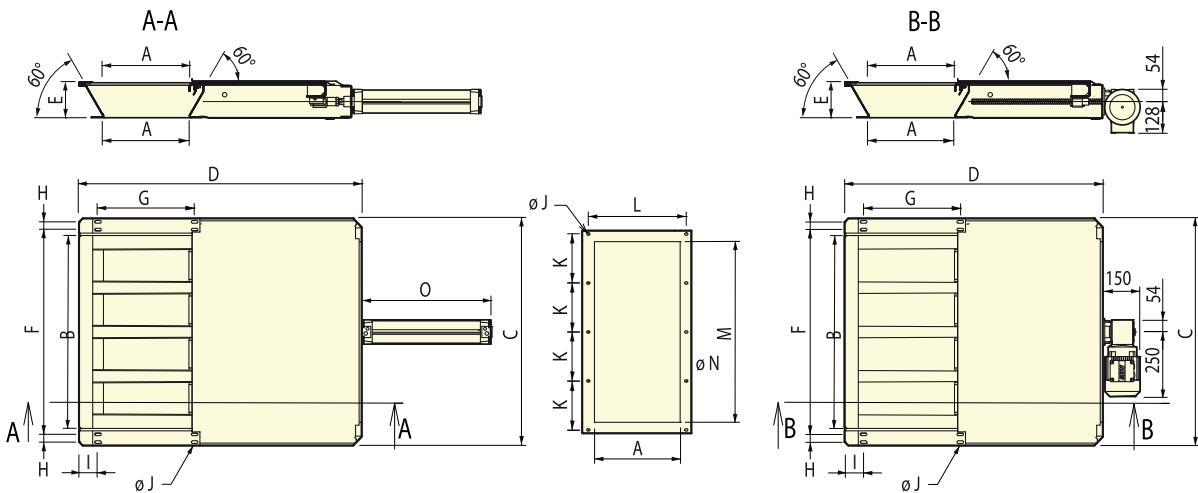
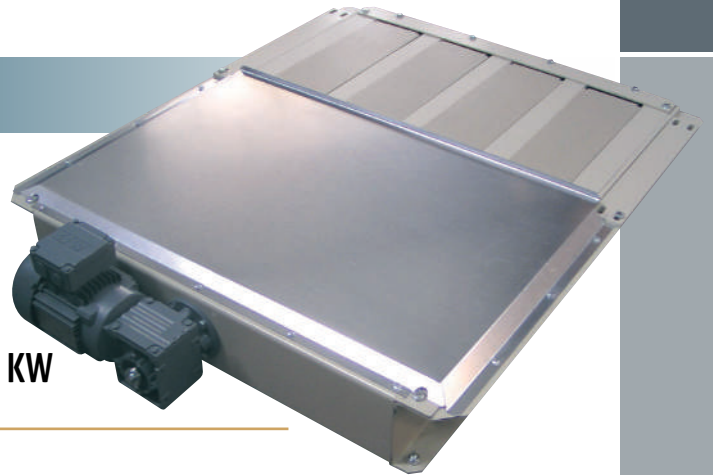


TTN

SIZE GRADING – DRY FLOUR > 0,3 mm

PNEUMATIC CYLINDER CONTROL

MOTO-REDUCTOR ELECTRICAL CONTROL 0,37 KW



mm	A	B	C	D	E	F	G	H	I	J	K	L	M	N
200 x 660	200	788	928	955	144	836	245	32	78	4 ø11	4x200	250	738	10xø11
250 x 660	250			1055			295					300		
300 x 660	300			1155			345					350		
350 x 660	350			1255			395					400		
400 x 860	400	988	1128	1355		1036	445			5x200	450	938	12xø11	

SKANSLIDE SLIDEVALVE ELECTRIC MOTOR CONTROL 0.36 KW SEW MOTOR

Chain conveyor slide valve with integral chain console.

Standard design: 1 x coat of RAL 7032 paint – stainless steel and other dimensions available on request

Subject to alterations

VERTICAL SLIDEVALVES



SINGLE FRAME

SINGLE FRAME

VERTICAL SLIDEVALVE

- Rigid steel frame standard finish one coat of paint Ral - 7032
- Scraper gasket PE-HD BLACK antistatic
- Gate on ball bearings

Stainless steel manufacturing on request.



DOUBLE FRAME

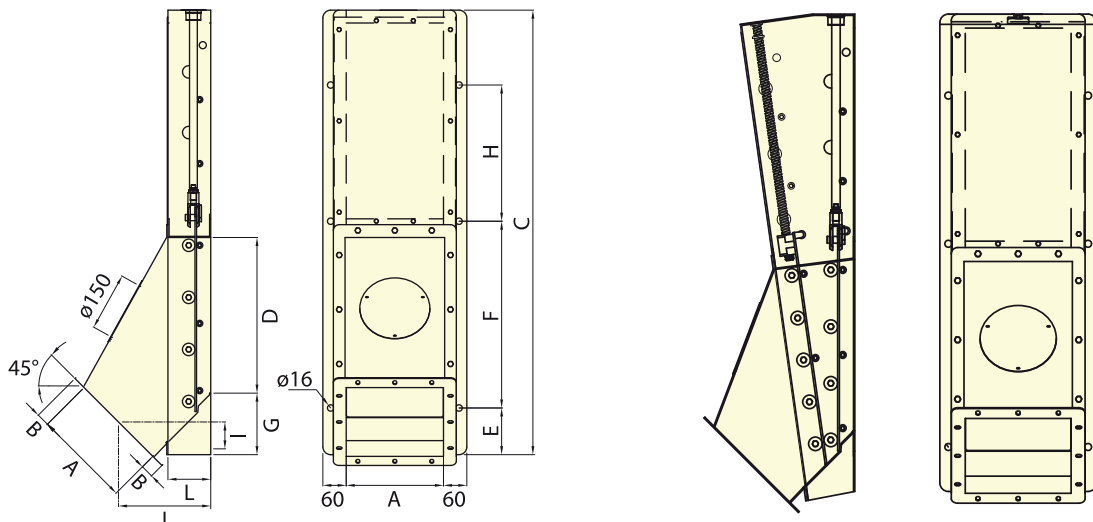
DOUBLE VERTICAL DOSING SLIDEVALVE

- Rigid steel frame standard finish one coat of paint Ral - 7032
- Scraper gasket PE-HD BLACK antistatic
- 2 spigot bearings
- 1 spigot fully open or closed
- 1 spigot controls flow

Stainless steel manufacturing on request.



TYPE	A	B	C	D	E	F	G	H	I	J	K	L
200 x 200 x 300	200	33	242	300	120	380	158	250	66	219	280	110
250 x 250 x 400	250		1142	400		480		350	84	237	330	
300 x 300 x 450	300	45	1262	450	140	465	171	465	100	269	380	
350 x 350 x 500	350		1362	500		2x290		420	118	286	430	
400 x 400 x 550	400		1462	550		2x315		420	135	305	480	

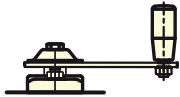


Subject to alterations

VERTICAL SLIDEVALVES



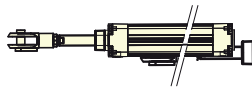
CONTROLS



SCREW MANUAL CONTROL

- Screw TR20 – gate 12 L
- Return angle + Handle control

Optional: Contactor: 2 inductives
 ø18 10 - 36V DC cable 2m HZ, 10m
 Atex



PNEUMATIC CONTROL

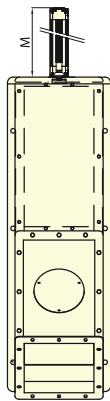
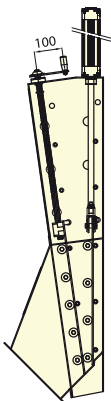
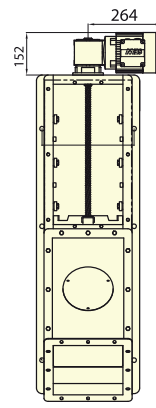
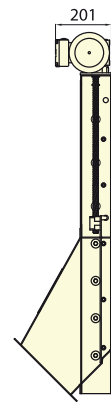
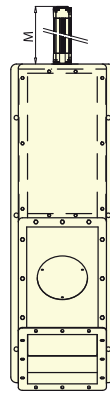
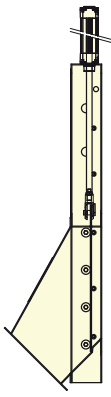
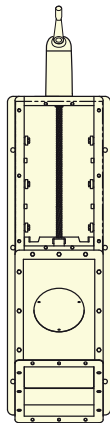
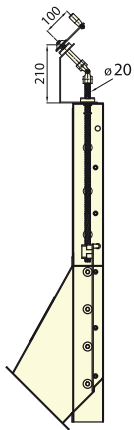
- Solenoid valve 5/2 – 1 EV 48 V
 AC - hose Ø 6/8
- 2 x needle valves
- Inductive end stop 2 x Ø18 10-36
 DC – 2 m ATEX cable – 10 m cable

Optional: Reed switch fitted to
 cylinder – 5 m cable

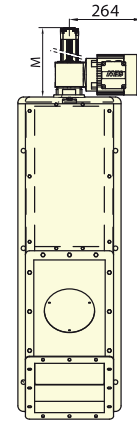
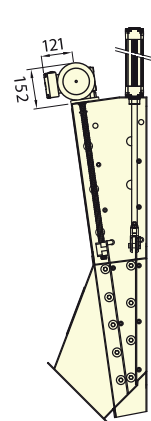


ELECTRICAL MOTOR CONTROL

- 137/min. Tri 230/400v 50Hz
 IP55 0,37 kw
- Contactor : 2 inductives ø18
 10 - 36V DC cable 2m HZ, 10m
 Atex



TYPE VVS / VVD	M	Cylinder
200 x 200 x 300	330	ø 50 x 220
250 x 250 x 400	380	ø 50 x 270
300 x 300 x 450	595	ø 63 x 470
350 x 350 x 500	645	ø 63 x 520
400 x 400 x 550	695	ø 63 x 570



Subject to alterations



SBK  SKANDINAVISK A/
BÅNDKOMPAGNI S

www.sbk-belt.dk

Birkegårdsvej 34 A | DK-8361 Hasselager
T: +45 87 34 70 80 | F: +45 87 34 70 81 | E: info@sbk-belt.dk

Subject to alterations